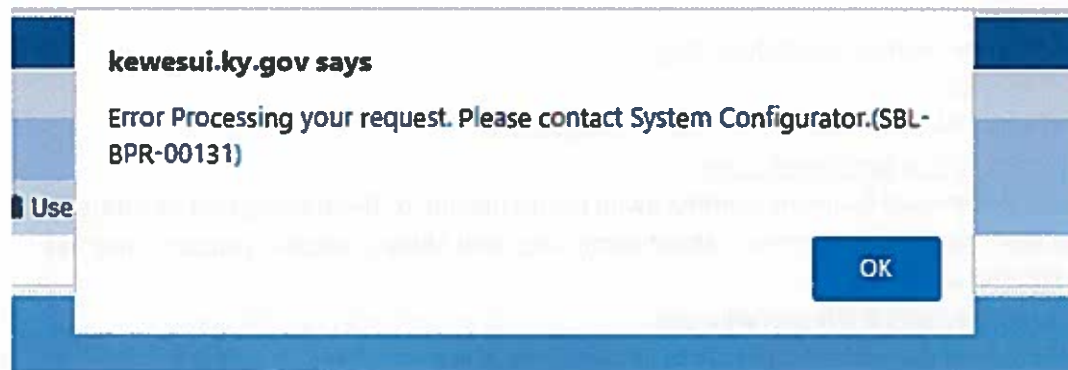


1. Cheri Montgomery [cheri.montgomery@ky.gov](mailto:cheri.montgomery@ky.gov)
  - Over DUA team
  - General knowledge of DUA/PUA claims
2. Brandy Gillis [brandy.gillis@ky.gov](mailto:brandy.gillis@ky.gov)
  - DUA Backdates
  - Overrides
  - Verification Codes (Will send to State Escalations)
3. Joey Trent [JosephA.Trent@ky.gov](mailto:JosephA.Trent@ky.gov)
  - Corrected 1099s (Will need Fraud Affidavit, screenshots of payments from KYNET & explanation as to the situation)
  - Pseudo Claims
4. Beverly Hillenmeyer [Beverly.Hillenmeyer@ky.gov](mailto:Beverly.Hillenmeyer@ky.gov)
  - Pseudo Claims
5. WFD BA Users Support [wfd.bauserssupport@ky.gov](mailto:wfd.bauserssupport@ky.gov)
  - Trouble with KEWES function like:



6. WFD KEWES Helpdesk [keweshelpdesk@ky.gov](mailto:keweshelpdesk@ky.gov)
  - KEWES issues as well (Ex: Birthdate Change)
7. Jamie Keith-Hensley [jhensley@ky.gov](mailto:jhensley@ky.gov)
  - UI Commission
  - Works with Cheri on DUA claims
8. Chanell Jones [chanell.d.jones@ky.gov](mailto:chanell.d.jones@ky.gov)
  - Wage Audits (Possible Unreported Earnings found on Clmnt)
9. Cylenna Barker/Heather Fraley [cylenna.barker@ky.gov](mailto:cylenna.barker@ky.gov) [Heather.Fraley@ky.gov](mailto:Heather.Fraley@ky.gov)
  - Union Workers in RESEA (Will need: Union Card, Social, & Full Name) – Helpdesk has to be put in for this issue
10. Mandy Jent [MandyM.Jent@ky.gov](mailto:MandyM.Jent@ky.gov)
  - Recons (Will need 417)
  - If no Monetary Determination has been sent (Will need 417)
11. Kim Lowe/Lora Newman/Sherry Smither/Kelly Vance [kimberly.lowe@ky.gov](mailto:kimberly.lowe@ky.gov) [lnewman@ky.gov](mailto:lnewman@ky.gov) [sherry.smither@ky.gov](mailto:sherry.smither@ky.gov) [kellya.vance@ky.gov](mailto:kellya.vance@ky.gov)
  - Recon (When wages are in 48, but not 4B)
12. Kelly Vance [kellya.vance@ky.gov](mailto:kellya.vance@ky.gov)

- Military Wages (Will need DD214)
- Census Wages (Will need SF-50)
- 13. Crystal Collins [crystalr.collins@ky.gov](mailto:crystalr.collins@ky.gov)
  - Immigration Issues (Will need Proof of Residency)
- 14. Donna Able [donna.abel@ky.gov](mailto:donna.abel@ky.gov)
  - Reissue payments
  - Sends Reissuance Affidavit to Claimant to address listed in KEWES
- 15. Jason Hutchinson [jason.hutchinson@ky.gov](mailto:jason.hutchinson@ky.gov)
  - Vet Rep
- 16. Jason Elam [jasons.elam@ky.gov](mailto:jasons.elam@ky.gov)
  - UI Auditor
  - Can check if Claimant work position is covered under UI
- 17. Deshaun Pettway [deshaunj.pettway@ky.gov](mailto:deshaunj.pettway@ky.gov)
  - Focus Assist login/help
- 18. Jordan Turner [jordan.turner@ky.gov](mailto:jordan.turner@ky.gov)
  - ID.me assistance
- 19. Jamie Keith(now Hensley) [jhensley@ky.gov](mailto:jhensley@ky.gov)
  - UI Commission
  - Works with DUA/PUA claims with Cheri Montgomery
- 20. Haley Presley [haleys.presley@ky.gov](mailto:haleys.presley@ky.gov)
  - Spouse of deceased Claimant wanting owed payments due to them being part of estate
  - If you don't know who to contact about something, and Tonia is unsure, you can email her and ask. She will know.
- 21. Burma Wheeler [burmaj.wheeler@ky.gov](mailto:burmaj.wheeler@ky.gov)
  - RESEA Question (If you can't get ahold of Amy or Steffan)
- 22. Destiny Conner/Cylenna Barker [destiny.conner@ky.gov](mailto:destiny.conner@ky.gov) [cylenna.barker@ky.gov](mailto:cylenna.barker@ky.gov)
  - PUA Setups
- 23. Cylenna Barker/Heather Fraley [cylenna.barker@ky.gov](mailto:cylenna.barker@ky.gov) [heather.fraley@ky.gov](mailto:heather.fraley@ky.gov)
  - Out of State Wages
  - Helpdesk Tickets
- ❖ Incorrect 1099 – For Claimants To Email
  - [Kyou1099@ky.gov](mailto:Kyou1099@ky.gov) (Needs to include: proof of 1099 being wrong, contact info, & social)